

	PETROL 95 ULP	PETROL 93 ULP & LRP	DIESEL 0.05%	DIESEL 0.005%	ILL. PAR.
GAUTENG PUMP PRICE (SA c/l) AS FROM 05/08/2020	1,517.000	1,488.000	-	-	-
WHOLESALE PRICE (SA c/l) AS FROM 05/08/2020	-	-	1,348.560	1,352.960	742.828
SINGLE NATIONAL MAXIMUM RETAIL PRICE	-	-	-	-	934.000
BASIC FUEL PRICE - 03/08/2020 (SA c/l)	524.311	514.844	566.577	570.184	501.693
PRESS RELEASE CONTRIBUTION TO BFP 31/07/2020 - 03/08/2020 (SA c/l)	564.770	545.770	552.630	557.030	499.128
UNIT OVER/(UNDER) RECOVERY - 03/08/2020 (SA c/l)	40.459	30.926	(13.947)	(13.154)	(2.565)
AVERAGE BASIC FUEL PRICE 31/07/2020 - 03/08/2020	525.885	517.445	572.242	575.941	508.294
AVERAGE UNIT OVER/(UNDER) RECOVERY 31/07/2020 - 03/08/2020	38.885	28.325	(19.612)	(18.911)	(9.166)

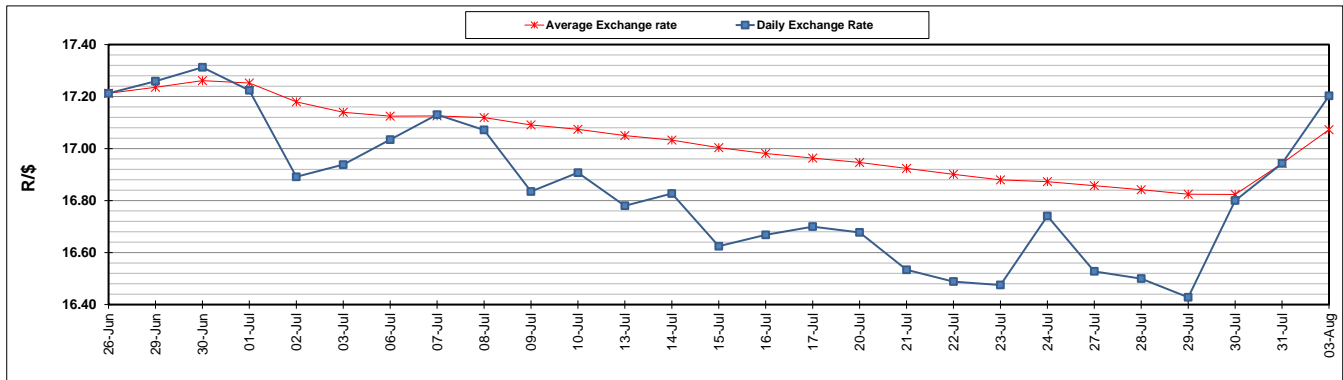
### ANALYSIS MOVEMENT OF AVERAGE OVER/(UNDER) RECOVERY

- MOVEMENT IN INTERNATIONAL PRODUCT PRICES
- MOVEMENT IN EXCHANGE RATE
- AVERAGE UNIT OVER/(UNDER) RECOVERY 31/07/2020 - 03/08/2020

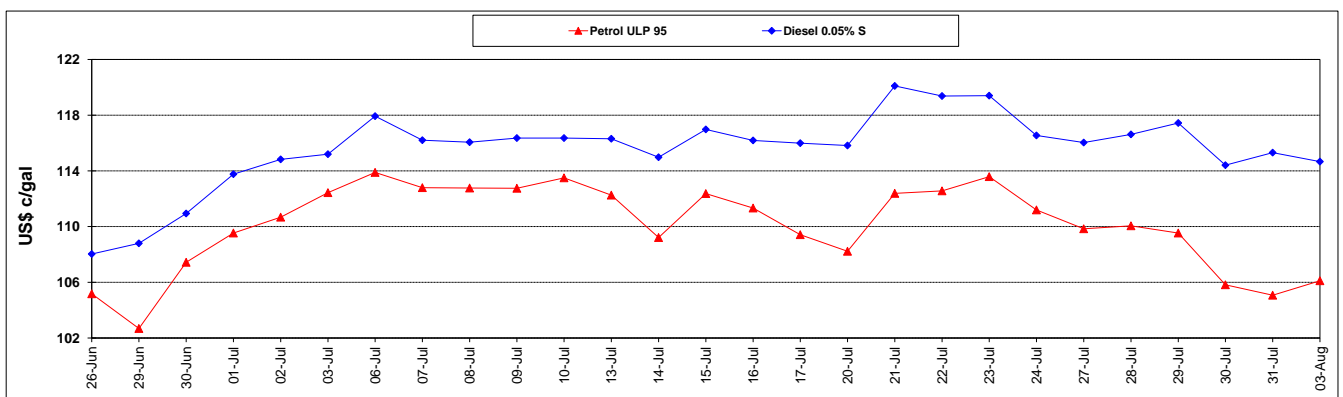
	PETROL 95	PETROL 93	DIESEL 0.05%	DIESEL 0.005%	ILL. PAR.
	46.567	35.884	(11.253)	(10.498)	(1.741)
	(7.682)	(7.559)	(8.359)	(8.413)	(7.425)
	38.885	28.325	(19.612)	(18.911)	(9.166)

### R/\$ EXCHANGE RATE - (R/\$17.2025 - 03/08/2020)

#### EXCHANGE RATE USED IN BASIC FUEL PRICE



#### INTERNATIONAL PRODUCT PRICES OF BASKET USED IN BASIC FUEL PRICE



#### BASIC FUEL PRICE IN SA CENTS PER LITRE

